

# Enhanced Security

Protect information through document security

you can

According to a recent study, paper records were the second most significant source of a data breach, second only to losing a laptop or other data device<sup>1</sup>. Canon multi-functional devices (MFDs) already provide advanced network security to reduce these risks by adding features such as automatic hard disk overwrite and IP and MAC address restrictions.

## Advantages of using uniFLOW

- An integrated solution with functions including print/copy accounting, universal secure printing, job routing and advanced scanning
- A modular system allowing it to be configured specifically to address the needs of your organisation

## Advantages of using Enhanced Security functionality

- Device locked until user authenticates with a fingerprint, door entry card, PIN number or username and password
- Device functionality changes based on user need or security group
- Jobs are only printed when the user is physically standing next to the MFD
- Copy, print, fax and scan job checked for restricted keywords
- Administrator automatically notified of any attempted security breach and proof of breach stored in document management system

<sup>1</sup> Source : Ponemon: Annual Study: U.K. Cost of a Data Breach, February 2008

<sup>2</sup> Source : NPO Japan Network Security Association 2008

<sup>3</sup> Feature requires the Secure Printing module

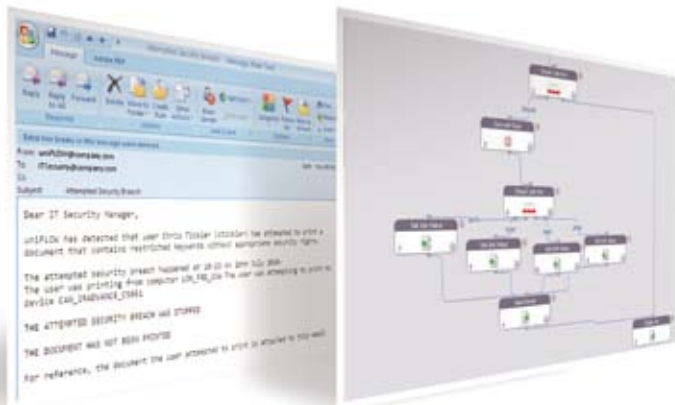
<sup>4</sup> Feature requires an AMS device license and compatible Canon MFD

<sup>5</sup> Feature requires the Biometric module

<sup>6</sup> Feature requires an iWSAM device agent and compatible Canon MFD and iWSAM server license

<sup>7</sup> Feature requires a Job Conversion Instance and iWSAM server license

<sup>8</sup> Feature requires a Scan Processing Server license



Restricted content detection

Security Workflow

uniFLOW extends the advanced device security already offered by Canon by both further restricting access to the MFD and by controlling how it is used once access has been granted.

Administrators can restrict users to only be able to access certain functions of the device depending on their security level<sup>4</sup>. For example, a normal user can be restricted to only copy in colour on the Canon MFD outside the managing directors office.

It is well known that the best place in an office to find secret information is the printer output tray. Almost 44% of lost confidential information is via paper documents<sup>2</sup>. Secure print "MyPrint Anywhere" functionality removes this risk by only printing documents when the user is physically standing next to the device<sup>3</sup>.

While access restrictions to the MFDs and secure printing functionality are good enough for most environments, there are certain areas that require extra security, such as departments dealing with medical records or other highly confidential data. Once the user has been granted access to the device, there is no way of knowing what has been printed or copied. uniFLOW allows administrators to capture an image of every print, copy, fax or scan that is made on the Canon MFD<sup>5</sup> or print jobs produced on any manufacturer device<sup>7</sup>. Once captured, the images of the jobs can be scanned for restricted keywords<sup>8</sup> to ensure that the user had permission to print or copy the document in the first place.

For maximum security, jobs can be held and checked for restricted content before they are even printed or sent to their scanned location. Administrators can be informed of any attempted breach and an image of the actual restricted document can be compressed and stored in a document management system.

uniFLOW

Canon

# Enhanced Security

Protect information through document security



## Required software and modules

- uniFLOW Base License (WE, BE, CE, EE)
- The secure printing features requires the Secure Printing module
- The content monitoring and prevention features require a scan processing server license, a scan volume package and an iWSAM server license

## Compatibility

- The iWSAM Device Agent and AMS device licence require a MEAP enabled Canon iR or imageRUNNER ADVANCE device

## Software Operating System

### uniFLOW server

- Windows 2000/2003/2008
- Internet Information Server 5.0 (2000), 6.0 (2003), 7.0 (2008)
- Internet Explorer 5.5 or higher (Internet Explorer 7 recommended)

## Document Security

### Device Access

- Personal login to MFD features by entering a code, username and password, or by using various smart, proximity or magnetic swipe cards
- Ability to restrict user functions based on login<sup>4</sup>

### Secure Printing<sup>3</sup>

- Holds print jobs on the server and releases them only after user identification at the output device
- Jobs can be released to any device, regardless of manufacturer
- Ability to link any number of uniFLOW servers to create a global print job release mechanism

### Content Monitoring and Prevention

- Monitor all print, copy, fax and scan jobs on Canon devices<sup>6</sup>
- Monitor all print jobs regardless of manufacturer<sup>7</sup>
- Ability to search jobs for restricted keyword content<sup>8</sup>
- Ability to email administrators when restricted keyword document is printed, copied, faxed or scanned by unauthorised user<sup>8</sup>
- Ability to convert jobs to PDF/PDF-A<sup>8</sup>
- Ability to compress documents for easier storage<sup>8</sup>
- Ability to store jobs in a document management system<sup>8</sup>
- Ability to hold print jobs before release to check for restricted keywords<sup>8</sup>
- Ability to hold scan jobs before release to check for restricted keywords<sup>8</sup>



Canon Inc.  
canon.com

Canon Europa  
canon-europe.com

English Edition 0152W657  
© Canon Europa N.V., 2010  
© NT-ware 2010

Canon (UK) Ltd  
Woodhatch, Reigate  
Surrey, RH2 8BF  
Tel: 01737 220000  
Fax: 01737 220022  
www.canon.co.uk

Canon Ireland  
Arena Road, Sandyford  
Industrial Estate  
Dublin 18, Ireland  
Tel: 01 2052400  
Fax: 01 2958141  
www.canon.ie